

ageLOC® GALVANIC SPA®

Get ready for the ever-young results you love with the luxurious spa experience you deserve—all in your own home. ageLOC Galvanic Spa products harness galvanic currents that accelerate clinically proven treatments to visibly rejuvenate your face, hair, and body with youthful vibrancy.



MEET ageLOC GALVANIC SPA

ageLOC Galvanic Spa is our most powerful, comprehensive at-home beauty device, designed to help deliver charged treatment products that visibly improve skin. This small-but-mighty galvanic system combines smart technology and clinically proven treatments to promote youthful vibrancy.

So smart and compact, it fits into your routine as easily as it fits in your hand. Using patented self-adjusting galvanic technology, ageLOC Galvanic Spa activates youth-renewing ageLOC ingredients to visibly rejuvenate key areas of your face, hair, and body—exactly when you need it.

Get ready to visibly smooth, firm, and rejuvenate from head to toe with ageLOC Galvanic Spa.

WHY YOU'LL LOVE IT

- Features four interchangeable conductors:
 - Face Conductor
 - Spot Treatment Conductor
 - Scalp Conductor
 - Body Conductor
- Carefully designed for ease of use and comfort.
- Smart technology that automatically adjusts to your skin the moment you begin your treatment, for the most effective and enjoyable experience.
- Features a sleek, intuitive display so you can start your treatment with the touch of a button.

COMPATIBLE PRODUCTS

- ageLOC Galvanic Spa Facial Gels
- Tru Face® Line Corrector
- ageLOC Galvanic Spa PowerMask
- ageLOC Nutriol® Intensive Scalp & Hair Serum (Coming Soon)
- ageLOC Body Shaping Gel
- ageLOC Galvanic Spa EnergEyes™ (Coming Soon)

HOW TO USE IT

Please see your ageLOC Galvanic Spa Owner's Manual for details on how to use the device with each compatible product.

WHAT YOU MIGHT ALSO LIKE

- ageLOC LumiSpa®
- ageLOC LumiSpa Accent
- ageLOC LumiSpa IdealEyes®
- ageLOC Me®
- ageLOC Nutriol Scalp & Hair Shampoo
- ageLOC Nutriol Scalp & Hair Conditioner
- ageLOC Transformation
- ageLOC Future Serum
- ageLOC Tru Face Essence Ultra
- ageLOC Tru Face Essence Uplifting Cream
- ageLOC Tru Face Essence Duet
- ageLOC Dermatic Effects®

LEARN MORE ABOUT IT

Why are there grooves on ageLOC Face Conductor?
The grooves on ageLOC Face Conductor keep your ageLOC Galvanic Spa Facial Gels between the conductor and your skin. This means the conductor keeps fresh product in this area, so you get a better treatment.

ageLOC® GALVANIC SPA®

How often do I need to change the batteries in my device?

The device will typically run for several months without having to change batteries.

Why does my ageLOC Galvanic Spa beep?

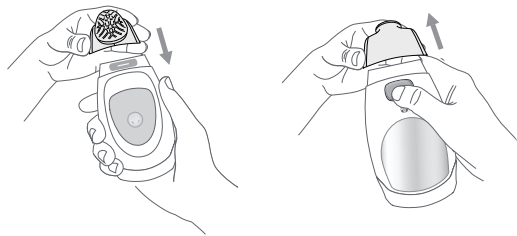
When you begin a treatment, the device will beep once, twice, or three times to indicate that it has automatically adjusted to your skin. After these initial beeps, your galvanic treatment has begun, and the device will beep every 10 seconds to indicate the unit is on and working, and every 5 seconds when your treatment is almost complete.

How do I change the conductor attachments?

To remove a conductor, first turn the device around so the chrome panel faces you. With your free hand, grip the conductor on its sides, and then firmly press the release button. Gently pull the conductor off the device by its sides.

2

To attach a conductor, hold the device with the display facing toward you. Align the conductor positioning indicator with the front of the device, then press the conductor firmly down by its sides until it snaps into place. If the conductor doesn't connect, make sure it is facing the right direction and is positioned correctly. Don't force the conductor down as this may damage it. Your ageLOC Galvanic Spa won't work if a conductor head isn't firmly attached.



CAUTION

The ageLOC® Galvanic Spa® device is only for use on healthy skin. Do not use if you have open sores or wounds, are prone to rosacea, have allergies to metal, or if you have problematic or overly sensitive skin. Check with your physician before using if you are pregnant, have a pacemaker or similar device, are epileptic, wear metal braces on your teeth, have a metal implant, or in case of illness.

Do not apply directly to the lips, eyes, or eyelids. The device and products are for external use only. If you experience any prolonged redness or abnormal irritation, discontinue use immediately and seek medical help if necessary. Keep out of reach of children. Use only as directed.

To reduce the risk of shock, burn, fire, or injury, do not immerse your device in water. Do not place or store where it may fall or be pulled into a bathtub, shower, sink, or toilet. Never operate the device if it has been damaged.

