

ageLOC® GALVANIC SPA®



MEET AGELOC GALVANIC SPA

Your small-but-mighty luxury beauty device that visibly rejuvenates skin exactly where you need—face, body, scalp as you indulge in spa-like beauty experiences at home, at your convenience. Single device, multiple uses.

Our most powerful, comprehensive ageLOC Galvanic Spa system innovatively harnesses the power of charged galvanic currents and compatible charged products to enhance delivery of key ingredients for faster, more noticeable results that are scientifically proven, clinically demonstrated.

WHY YOU'LL LOVE IT

- **Single device, multiple uses.** It works synergistically with compatible products to deliver a head to toe beauty experience and solution.
FACE: Visibly rejuvenate the complexion and remove impurities. Instantly refresh and hydrate skin. Help reduce appearance of fine lines and wrinkles.
BODY: Help smooth the overall appearance of skin and minimize the appearance of cellulite.
SCALP: Nourish, treat², rejuvenate scalp to help hair look fuller, thicker, more lustrous, and healthier.
- **Smart, easy & compact** so it fits seamlessly into your everyday at-home routine as easily as it fits in your hand.
- **Makes your skin care products work harder.** Laboratory research demonstrates that treatments¹ with Galvanic technology can enhance the delivery and absorption of key ingredients for up to 24 hours and optimize efficacy of skin care products.
- **An affordable and convenient alternative** to high maintenance spa sessions at a salon.

WHAT POWERS IT

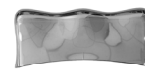
- **Device**—ageLOC Galvanic Spa innovatively harnesses the technology of galvanic currents and ionic charges in enhancing delivery of key ingredients to optimize efficacy. Like magnets, by applying specially formulated products with a certain charge to the skin, and channelling the same charge from the device, products are pushed away by the galvanic currents (like charges repel) and driven to the skin for better absorption.
- **Interchangeable conductors**—ageLOC Galvanic Spa comes with 4 interchangeable conductor attachments to enable the versatility of use on face, body, scalp and even targeted spot areas.



Face Conductor



Spot Conductor



Body Conductor



Scalp Conductor

- **Compatible products**—A luxury suite of specially formulated products to cater to your needs. Match it with ageLOC Galvanic Spa's innovative technology and versatile conductors for faster, more noticeable results to visibly improve skin appearance on face, body, and rejuvenate scalp for healthier looking hair.

¹Treatment refers to the delivery of skin benefits.

²Treat refers to how it helps to restore damaged hair by providing deep nourishment.

ageLOC® GALVANIC SPA®

Target & Personalize To Your Needs

CONCERN: FACE

ageLOC Galvanic Spa Facial Gels—Rejuvenate tired and stressed complexion for hydrated, soft, clean and refreshed skin! An easy 2-step beauty indulgence that starts with a pre-treat gel to soothe and condition the skin, binding to impurities followed by the treatment gel that draws out impurities targeted in the pre-treat and delivering ageLOC benefits to the skin.



CONCERN: FACE

ageLOC Galvanic Spa PowerMask—Quench your skin's thirst with an instant surge of hydration. This moisturizing mask, made of biocellulose to deliver maximum hydration, contains a proprietary blend infused with charged moisture magnets that mobilizes under galvanic currents to give you instantly refreshed, hydrated, and visibly renewed and plumped skin.



CONCERN: FACE LINES

Tru Face Line Corrector—Targets signs of aging with peptides that help soften the appearance of fine lines around your mouth, eyes, and forehead. Clinically proven to improve appearance of fine lines, crow's feet, and tautness.



CONCERN: BODY

ageLOC Body Shaping Gel—Helps smooth the skin for a more contoured appearance, minimize the appearance of cellulite and improves appearance of skin's firmness for a more youthful look. For a more contoured, firmer, smoother you.



CONCERN: SCALP

ageLOC Nutriol Intensive Scalp & Hair Serum—Delivers vital proteins and nutrients to your scalp and strengthen your roots for thicker, fuller-looking and shinier hair. This leave-in, non-greasy formula revitalizes the scalp day after day and nourishes hair for a healthier look.



DID YOU KNOW

- The first generation Galvanic Spa model debuted in 2001 and underwent continual evolution ever since as Nu Skin continues to innovate and improve existing product portfolio to provide a better customer experience.
 - 2004: Galvanic Spa II Model
 - 2010: ageLOC Edition Model
 - 2019: New user interface
- Carefully designed for ease of use and comfort, this legacy device received its latest facelift with a sleek, intuitive display powered by LED lights. Start your treatment¹ simply with the touch of a button.
- Users in a self-perception study agreed that:
 - New user interface is easy to use (94.3%)
 - Device is easy to hold (100%)
 - Display is easy to understand/maneuver (97.1%)
 - Display has a modern/attractive look (97.1%)

*Percent of users by self-perception

HOW TO USE IT

Please see your ageLOC Galvanic Spa Owner's Manual for details on how to use the device with each compatible product.

TRY IT WITH THESE

- **ageLOC LumiSpa®**—a first-of-its-kind, dual-action skin care system that helps to deliver dramatic skin renewal and deep cleansing in 1 Step for 2 Minutes with 7 Benefits.
- **ageLOC Me®**—creates an entirely new approach to customized anti-aging skin care. Brilliant yet simple to use, ageLOC Me delivers five powerful anti-aging products, custom selected from almost 2,000 possible regimen combinations. Delivering one streamlined, simplified regimen to you.
- **ageLOC Tru Face Essence Ultra**—helps contour and firm the appearance of skin for a more youthful look.
- **ageLOC Dermal Effects®**—helps smooth the

¹Treatment refers to the delivery of skin benefits.

ageLOC® GALVANIC SPA®

appearance of skin and improve the appearance of skin firmness. For a more contoured, smoother looking you.

- ageLOC Nutriol® Scalp & Hair Shampoo and ageLOC Nutriol® Scalp & Hair Conditioner—provide optimal nourishment to support fuller-looking and healthier-looking hair, while an exclusive blend of nourishing ingredients gives your hair extra volume and shine.

FREQUENTLY ASKED QUESTIONS

What makes ageLOC Galvanic Spa unique?

ageLOC Galvanic Spa is a versatile and innovative beauty device that brings the spa-like luxury experience home to you, at your convenience and comfort.

It is a single device designed for multiple uses. By switching the interchangeable conductor attachments and matching with compatible products, you can indulge in a comprehensive beauty solution for face, body, scalp & hair. Even for face, you can go from visibly rejuvenating your complexion to targeting the appearance of lines and wrinkles.

This small-but-mighty device innovatively harnesses the power of galvanic technology to enhance the delivery of key potent ingredients for faster, more noticeable and visible results.

A range of compatible products specially formulated and scientifically proven to deliver key ingredients with demonstrated results are available for your selection depending on your target concern.

I don't feel anything when I use my device. Am I doing something wrong?

Not at all. Most people won't feel anything when using ageLOC Galvanic Spa, which is why we've designed our beep system. While operating correctly, the device will beep every 10 seconds (and every 5 seconds when nearing the end of a treatment¹), so you know that the device is doing its job.

Why does my ageLOC Galvanic Spa beep?

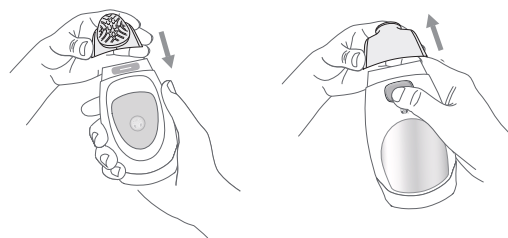
When you begin a treatment¹, the device will beep once, twice, or three times to indicate that it has automatically adjusted to your skin. After these initial beeps, your galvanic treatment¹ has begun, and the device will beep every 10 seconds to indicate the unit is on and working, and every 5

seconds when your treatment¹ is almost complete.

How do I change the conductor attachments?

To remove a conductor, first turn the device around so the chrome panel faces you. With your free hand, grip the conductor on its sides, and then firmly press the release button. Gently pull the conductor off the device by its sides. To attach a conductor, hold the device with the display facing toward you. Align the conductor positioning indicator with the front of the device, then press the conductor firmly down by its sides until it snaps into place.

If the conductor doesn't connect, make sure it is facing the right direction and is positioned correctly. Don't force the conductor, as this may damage it. Your ageLOC Galvanic Spa won't work if a conductor head isn't firmly attached.



Why are there grooves on the ageLOC Face Conductor?

The grooves on the ageLOC Face Conductor keep your Galvanic Spa Facial Gels with ageLOC between the conductor and your skin. This means the conductor keeps product in this area, so you get a better treatment¹.

CAUTION: The ageLOC® Galvanic Spa® device is only for use on healthy skin. Do not use if you have open sores or wounds, are prone to rosacea, have allergies to metal, or if you have problematic or overly sensitive skin. Check with your physician before using if you are pregnant, have a pacemaker or similar device, are epileptic, wear metal braces on your teeth, have a metal implant, or in case of illness.

Do not apply directly to the lips, eyes, or eyelids. The device and products are for external use only. If you experience any prolonged redness or abnormal irritation, discontinue use immediately and seek medical help if necessary. Keep out of reach of children. Use only as directed.

To reduce the risk of shock, burn, fire, or injury, do not immerse your device in water. Do not place or store where it may fall or be pulled into a bathtub, shower, sink, or toilet. Never operate the device if it has been damaged.

¹Treatment refers to the delivery of skin benefits.