

# ecosphere® WATER PURIFIER

## USER MANUAL



System Tested and Certified by  
NSF International against  
NSF/ANSI Standard 42,53,55.  
See Performance Data Sheet for  
individual contaminant reduction.

# TABLE OF CONTENTS

- System Components 3
- Function Overview 4
- How to Set up Your Purifier 6
- 3in1 Cartridge Set Up 7
- Initial Run 8
- Use 8
- Purified Water 8
- Tap Water 8
- Replacing 3in1 Cartridge 9
- 3in1 Cartridge Replacement Cycle 10
- 3in1 Cartridge Replacement 10
- Maintenance 11
- Troubleshooting 11
- Precautions 12
- Main Specifications 14
- Replacement and Warranty Information 14

# SYSTEM COMPONENTS

3

4

6

7

8

8

8

8

9

10

10

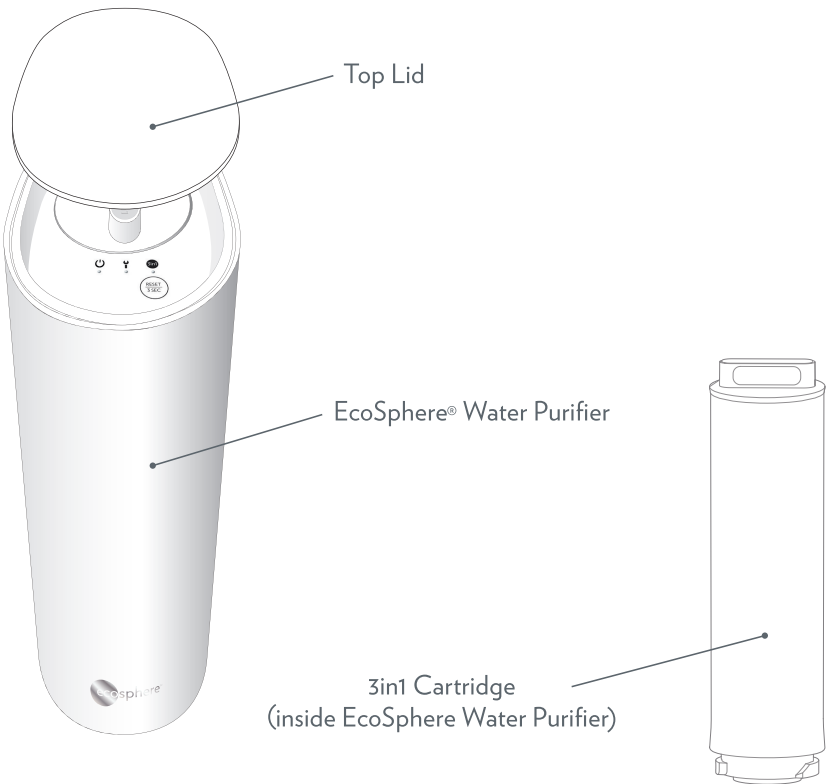
11

11

12

14


14



Top Lid


EcoSphere® Water Purifier

3in1 Cartridge  
(inside EcoSphere Water Purifier)



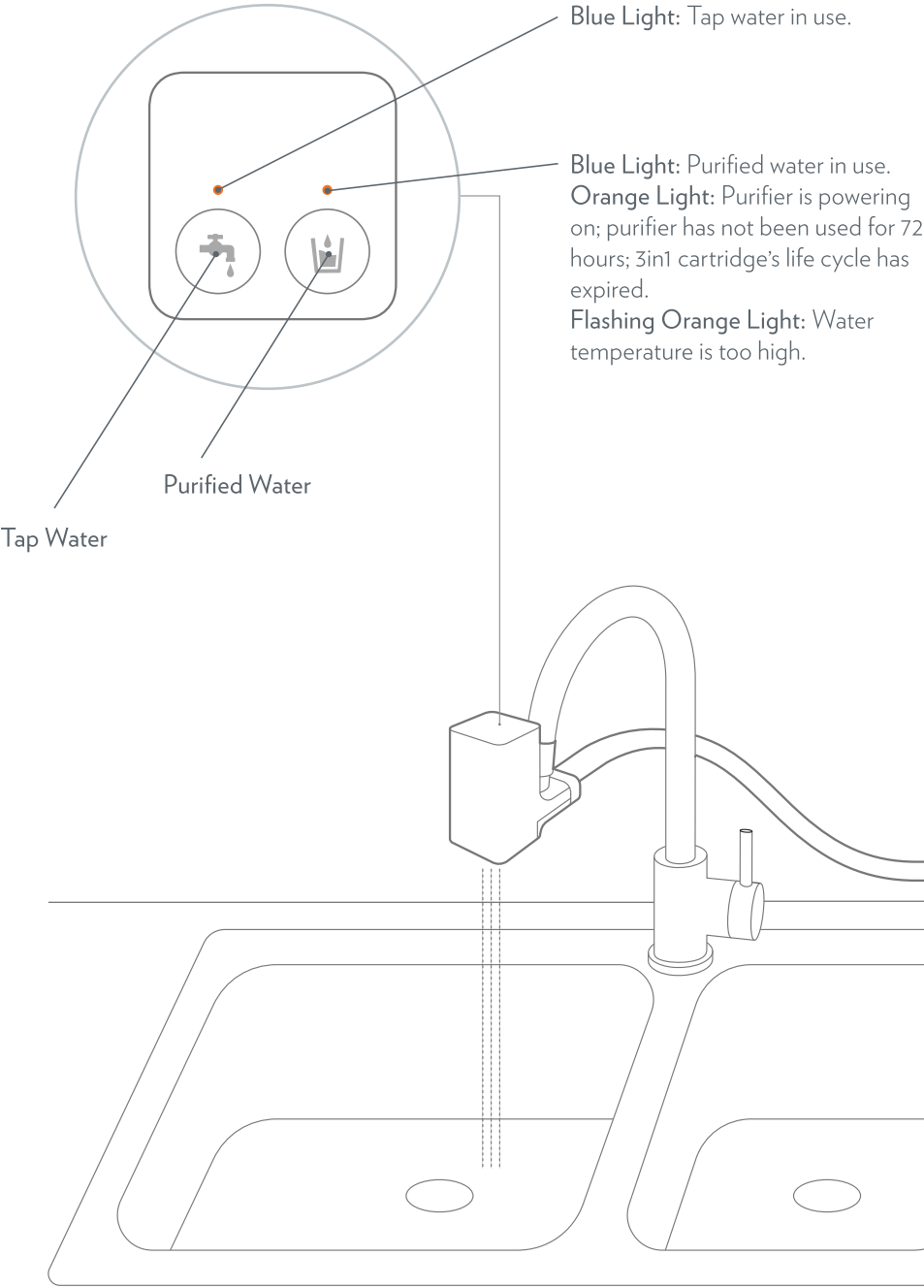
Faucet Attachment





\*The illustrated kit below is for Singapore and Malaysia only. It may vary in other markets.

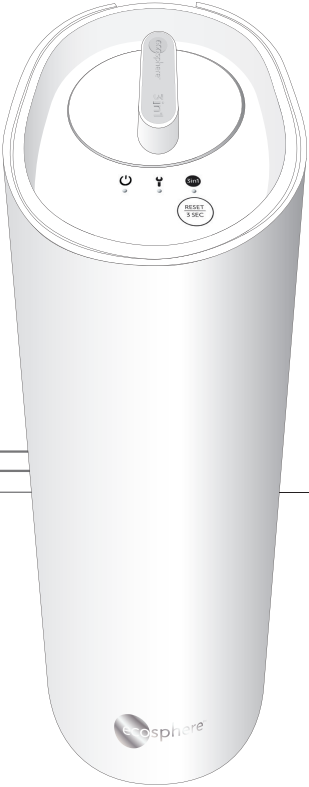


Faucet Adapter Kit

# FUNCTION OVERVIEW



-  **Power Light Indicator:** When light is blue, water purifier is on.
-  **Maintenance Light Indicator:** When light is orange, the water purifier needs repair.
-  **3in1 Cartridge Light Indicator:** When light is orange, the 3in1 cartridge must be replaced.
-  **3in1 Reset:** After installing a new 3in1 cartridge, hold for three seconds to reset the water purifier. This ensures that the lifespan of the 3in1 cartridge is accurately tracked.



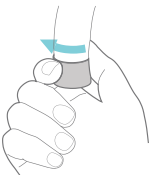
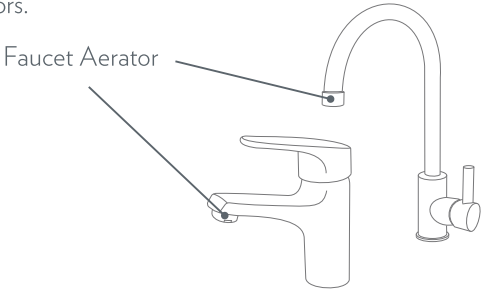
# HOW TO SET UP YOUR PURIFIER

## REMOVING THE FAUCET AERATOR

### WHAT IS THE AERATOR?

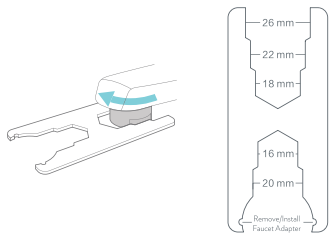
Most faucets contain a removable aerator that helps mix water and air so that the flow of water is consistent.

**NOTE:** Some old faucets do not have aerators.



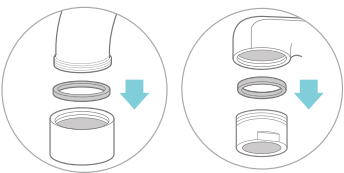
If the aerator has a glossy exterior, simply unscrew it by hand.

**PRO TIP:** Use a towel to increase friction.



If the aerator is firmly attached, use the small wrench provided.

**PRO TIP:** The small wrench is specifically designed to remove aerators and install the EcoSphere® Water Purifier faucet adapters.



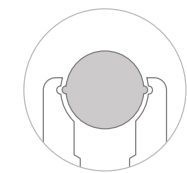
Make sure to also remove the washer above the aerator.

**NOTE:** These faucets are not recommended for use with the EcoSphere® Water Purifier.

	Shower heads		Spout outlets wider than 24 mm
	Square spout outlets		Spout outlets shorter than 15 mm
	Oval spout outlets		Retractable faucets

## ATTACHING THE FAUCET ADAPTER

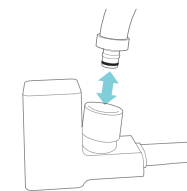
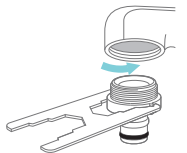
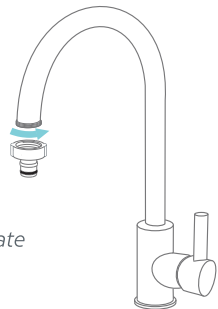
Using the small wrench, attach the appropriate adapter so that it fits tightly.



Select the appropriate adapter from the Faucet Adapter Kit.

Use the small wrench to securely attach the adapter to the faucet.

**PRO TIP:** Make sure to match the appropriate faucet thread to avoid water leaks.



Hold the faucet attachment with one hand, and then gently push the faucet attachment onto the adapter while holding the faucet with your other hand. Stop when you hear the faucet attachment click into place.

To detach the faucet attachment from the faucet, hold the faucet firmly with one hand and the faucet attachment with the other hand, then pull down to remove the faucet attachment.

Installation of this said system shall comply with all state and local laws and regulations in the location of use.

## 3in1 CARTRIDGE SETUP

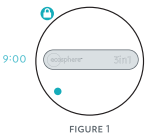


FIGURE 1

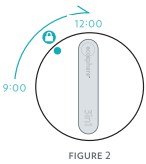


FIGURE 2

CARTRIDGE FLUSH WITH SURFACE

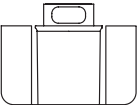


FIGURE 3



FIGURE 4

Remove plastic wrap from the 3in1 cartridge.

Insert the 3in1 cartridge gently into the water purifier, as shown in figure 1.

Gently press and turn 3in1 cartridge 90° clockwise.

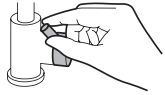
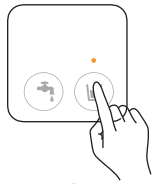
Align dot with lock icon (figure 2).

Make sure cartridge top is flush with the surface of the water purifier (figure 3).

After the new 3in1 cartridge is securely in place, let water run through the water purifier until the water comes out clear to prepare the 3in1 cartridge for normal use (figure 4).

**NOTE:** Letting the water run until clear cleans the 3in1 cartridge and its tubing. Water will initially come out greyish-black or soapy. This is normal.

## INITIAL RUN



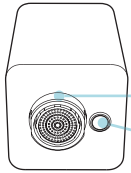
Touch the “Purified Water” button. The LED light will show orange.

Turn on the water faucet.

Flush the water purifier for 30 minutes to prepare the 3in1 cartridge for normal use. The LED light will change to blue once the water purifier is ready for use.

**NOTE:** Letting the water run until clear cleans the 3in1 cartridge and its tubing. Water will initially come out greyish-black or soapy. This is normal.

## USE

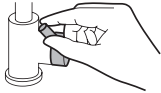
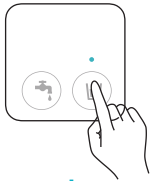


The faucet attachment has two outlets—one for tap water and the other for purified water.

Tap water

Purified water

## PURIFIED WATER



Touch the “Purified Water” button. A blue LED light will indicate your selection.

Turn on the faucet to dispense purified water.

### PRECAUTIONS:

- The water purifier will switch to tap water if water temperature is over 38°C to protect the life cycle of the 3in1 cartridge.
- Water flow will reduce if the purifier is run in conjunction with lower water temperature and pressure. If LED light shows orange, let the water run through the water purifier until the LED light changes to blue.
- The device will automatically switch to tap water mode if the faucet is turned off for more than 10 seconds.

## TAP WATER



**STANDBY MODE:** Touch the “Tap Water” button to switch to tap water.

You can alternate between tap water and purified water mode by pressing either button.

When using “Tap Water” mode, water temperature is irrelevant.

## REPLACING 3in1 CARTRIDGE



When the 3in1 light indicator starts flashing orange, it means that the 3in1 cartridge will need to be replaced soon.



When the 3in1 and Purified Water light indicators remain orange, it is time to replace the 3in1 cartridge.



### PURCHASING 3in1 CARTRIDGES

There are two ways to purchase replacement 3in1 cartridges:

- Order online at [www.nuskin.com](http://www.nuskin.com)
- Purchase at your local Nu Skin Distributor Center



# 3in1 CARTRIDGE REPLACEMENT CYCLE

3in1 Cartridge	REPLACEMENT CYCLE
	12 months

**NOTES:** The replacement cycle is a recommended cycle. The replacement cycle will vary depending on your country and region, water quality, season, and frequency of usage.

## 3in1 CARTRIDGE REPLACEMENT

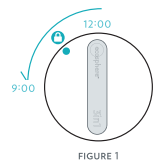


FIGURE 1

After turning off the faucet, wait two minutes before removing the 3in1 cartridge.

Gently press and turn the old 3in1 cartridge 90° counter-clockwise (figure 1).

With the water off and the cartridge in the unlocked position, carefully lift the cartridge out of the purifier (figure 2).



FIGURE 2

Follow the directions for cartridge setup on page 7.

Reset the water purifier by holding the “3in1 Reset” button for three seconds (figure 3).



FIGURE 3

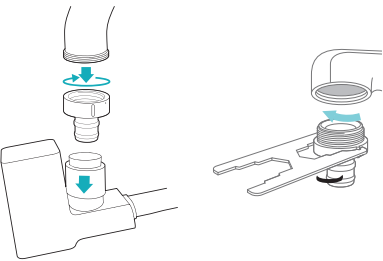
After the new 3in1 cartridge is securely in place, let water run through the water purifier until the water comes out clear to prepare the 3in1 cartridge for normal use.

**NOTE:** Letting the water run until clear cleans the 3in1 cartridge and its tubing. Water will initially come out greyish-black or soapy. This is normal.

# MAINTENANCE

## CLEANING THE FAUCET ADAPTER

Periodically clean the faucet adapter to remove any hard water deposits or impurities that might clog the purifier.



Hold the faucet attachment with one hand and the faucet with the other hand, then pull down faucet attachment until it comes off.

If necessary, use the small wrench to unscrew the faucet adapter.

Clean the faucet adapter to remove any hard water deposits or impurities that may clog the purifier.

## TROUBLESHOOTING

### LED INDICATORS

ICON	LED	STATUS	CAUSE	SOLUTION
		Solid Orange LED	The purifier is in an abnormal state.	Contact your local Nu Skin Distributor Center.
		Flashing Orange LED	3in1 cartridge is nearing the end of its life cycle.	Purchase a new 3in1 cartridge soon.
		No light	3in1 cartridge's life cycle has expired.	Replace the 3in1 cartridge.
		Flashing Orange LED	Water might be over 38 °C.	Lower the temperature of the water.
		Solid Orange LED	Purifier is powering on. Purifier has not been used for 72 hours.	Touch the “Purified Water” button and run water until the LED light changes to blue.
		Solid Blue LED	3in1 cartridge's life cycle has expired.	Replace the 3in1 cartridge.
		Solid Blue LED	Purifier is working properly.	

# TROUBLESHOOTING (cont.)

MALFUNCTION	CHECK LIST/CAUSE
No purified water comes from the faucet	Make sure the power cord is plugged into an electrical outlet. Check if the abnormal state LED indicator is on. Make sure the 3in1 cartridge is installed correctly. Make sure the main water supply is open. Make sure you are using the correct 3in1 cartridge.
Top blue LED ring is blinking	Make sure the main water valve is open.
Poor purified water flow	Check the 3in1 cartridge is not blocked. Check the life cycle of the current 3in1 cartridge. Tap water pressure is too low. Inappropriate water temperature. Increase water temperature, but do not exceed 38°C. Clean the faucet adapter to remove any deposits or impurities.
Purified Water mode switches to Tap Water mode	Make sure the water temperature of the purified water does not exceed 38°C. If the water purifier overheats because of excessive use, wait until it cools down. Make sure the 3in1 cartridge has been installed correctly.

## PRECAUTIONS

### STORAGE

- Do not use, store, or expose the EcoSphere® Water Purifier to environments where temperatures drop below 0°C.

### WATER SOURCE/PRESSURE

- Use the EcoSphere® Water Purifier only with a municipal water source.
- Do not use if the water pressure is higher than 0.1–0.4MPa, or install a water pressure reducing valve.

### DAILY MAINTENANCE

- If the EcoSphere® Water Purifier fails to work properly, contact your local Nu Skin Distributor Center for support.
- Do not attempt to repair the EcoSphere® Water Purifier yourself. This will void any warranty.
- When moving or transporting the EcoSphere® Water Purifier, make sure you package all the components securely.
- Regularly clean the faucet adapter and other component of the EcoSphere® Water Purifier to avoid damage.
- When cleaning the exterior of the EcoSphere® Water Purifier, make sure water does not drip into the hole that contains the 3in1 cartridge.
- Do not clean the interior of the 3in1 cartridge chamber with tap water, as doing so may cause bad odors and bacteria to build up inside the chamber.
- Replace the 3in1 cartridge when the LED light is orange.

### USE

- If you are not going to use your EcoSphere® Water Purifier for a long time, turn off the faucet, and switch off the power supply.
- Do not switch on and off the power supply unnecessarily. Turning off the power supply daily is not recommended.
- When using the EcoSphere® Water Purifier after a long period of unuse, run the faucet to flush any particles that might clog the 3in1 cartridge before attaching the water purifier.
- When using water that is poor quality, low temperature, or very low pressure, the flow of purified water will be weak. This is normal.
- When using a new 3in1 cartridge, purified water will start by coming out greyish-black or soapy. This is normal. Please continue to flush the purifier for 30 minutes before normal use.
- Do not place the EcoSphere® Water Purifier on its side or upside down.
- Do not use the EcoSphere® Water Purifier at temperatures below 5°C or higher than 38°C as this may cause damage to the unit.
- Do not drop the EcoSphere® Water Purifier and 3in1 Cartridge.
- Discard all shipping packaging. Do not let children play with the EcoSphere® Water Purifier. Young children should be supervised when operating the purifier.
- Do not use in public areas.

### ACCESSORIES AND CARTRIDGES

Always use the accessories and 3in1 cartridge appropriate for the EcoSphere® Water Purifier.

### STORAGE

- Direct sunlight shortens the life cycle of the EcoSphere® Water Purifier components.
- Do not use in temperatures below 5°C or higher than 38°C as this may cause damage to the purifier.
- Do not place near fire or magnetic devices.
- Do not place near humid or dusty areas.
- Do not place heavy objects on top of the unit.

### ADDITIONAL CONSIDERATIONS

- Do not use the power cord if it is wet.
- Do not bend, twist, or damage the power cord in any way.
- If the power cord gets damaged in any way, stop using the device and contact your local Nu Skin Distributor Center for support.
- Do not pull on the power cord to unplug it from the wall outlet.
- This device can be used by children aged from 8 years and above and persons with reduced physical, sensory or mental capabilities or lack of experience and knowledge if they have been given supervision or instruction concerning use of the device in a safe way and understand the hazards involved. Children shall not play with the device. Cleaning and user maintenance shall not be made by children without supervision.
- Children should be supervised to ensure that they do not play with the device.
- This device contains a UVC emitter.
- The UVC emitter cannot be replaced by users.
- Unintended use of the device or damage to the housing may result in the escape of dangerous UVC radiation. UVC radiation may, even in little doses, cause harm to the eyes and skin.
- Devices that are obviously damaged must not be operated.

- The absorption media used during the operation of the said Model #00001703 shall not be regenerated and re-used.
- Do not use with water that is microbiologically unsafe or of unknown quality without adequate disinfection before or after the system.
- Systems certified for cyst reduction may be used on disinfected waters that may contain filterable cysts.
- The EcoSphere® Water Purifier achieved a 99.99% reduction of cysts.

## MAIN SPECIFICATIONS

NAME	EcoSphere® Water Purifier
MODEL	00001703
PRODUCT SIZE	W134 X H410 X D202 mm
WEIGHT	2.95 kg—water purifier 1.1 kg—3in1 cartridge
WATER SOURCE	Municipal tap water
CAPACITY	5200 L
WATER FLOW*	1.7L/min (0.45 gpm)
OPERATING WATER PRESSURE	0.1–0.4MPa (14.5–58.0 PSIG)
OPERATING WATER TEMPERATURE	5–38°C (41–100.4 °F)
INPUT	100–240V ~ 50/60Hz
POWER	18W
IEC PROTECTION CLASS	Class II
MODEL NUMBER(S) OF REPLACEMENT COMPONENTS	[#00001702, 3in1 Cartridge Eco Water Purifier]
MODEL NUMBER(S) OF UV LAMP	Stanley Electric UC/4F150/Z

\* Water flow was measured under laboratory test conditions.  
Test conditions: Tap water; water pressure 0.2 MPa; water temperature 25°C, after two minutes of continuous operation.

The said Model #00001703 conforms to NSF/ANSI 42-2019 “Drinking Water Treatment Units-Aesthetic Effects,” NSF/ANSI 53-2019 “Drinking Water Treatment Units-Health Effects and NSF/ANSI 55-2019,” “Ultraviolet Microbiological Water Treatment Systems.”

## REPLACEMENT AND WARRANTY INFORMATION

**LIMITED ONE-YEAR WARRANTY:** Nu Skin guarantees your EcoSphere® Water Purifier to be free from defects in materials and workmanship for a period of one year from the original date of consumer purchase. This warranty does not cover damage to the product as a result of misuse or accident. If the product becomes defective within the one-year warranty period, please call your local Nu Skin Distributor Center for support. Please retain your proof of purchase (i.e. original invoice) to claim your replacement and warranty.

## Performance Data Sheet

EcoSphere® Water Purifier Model: 00001703

This system has been tested according to NSF/ANSI Standards 42, 53, and 55 for reduction of the substances listed below. The concentration of the indicated substances in water entering the system was reduced to a concentration less than or equal to the permissible limit for water leaving the system, as specified in NSF/ANSI Standards 42, 53, and 55.”



System tested and certified by NSF International against NSF/ANSI Standard 42 for the reduction of chlorine and Nominal Particulate Class I, Standard 53 for Cysts and standard 55 for UV disinfection performance.

SUBSTANCE REDUCTION AESTHETIC EFFECTS	INFLUENT CHALLENGE CONCENTRATION	MAXIMUM PERMISSIBLE PRODUCT WATER CONCENTRATION EFFECTS	AVERAGE % REDUCTION
Chlorine	2.0 mg/L ± 10%	≥ 50% Reduction	97.4%
Particulate, Class I particles .5 to < 1 µm	At least 10,000 particles/mL	≥ 85% Reduction	99.8%
CONTAMINANT REDUCTION	INFLUENT CHALLENGE CONCENTRATION	MAXIMUM PERMISSIBLE PRODUCT WATER CONCENTRATION EFFECTS	AVERAGE % REDUCTION
Live Cysts	Minimum 50,000/L	99.95%	> 99.99%

### WATER SUPPLY PARAMETERS

SERVICE FLOW RATE: 1.7 L/min

SERVICE LIFE: 5,200 L (1373.7 gal)

WORKING WATER PRESSURE RANGE:  
0.1Mpa to 0.4Mpa (14.5 psig – 58.0 psig)

WORKING OPERATING TEMPERATURE RANGE: 5°C to 38°C (41.0° F – 100.4° F)

WORKING HUMIDITY: ≤ 90%

The EcoSphere Water Purifier is comprised of a series of filters for mechanical filtration and chemical adsorption: a polypropylene pleated pre-filter, a compressed activated carbon block filter, a polyether sulfone membrane filter, and an ultraviolet lamp.

The replacement filter model #00001702 must be replaced every 12 months or 5,200 L (1373.7 gal), whichever comes first. After changing the water filter it is important to perform a system flush. See user manual for details.

It is important that the manufacturer's recommended installation, maintenance, and filter replacement requirements be carried out for the product to perform as advertised. See the user manual for warranty information.

The water system must be installed in compliance with local laws and regulations.

For replacement cartridges or to have your unit serviced please call your local Nu Skin Distribution Center or visit [www.nuskin.com](http://www.nuskin.com)

While testing was performed under standard laboratory conditions, actual performance may vary. The spent adsorption media used in the filter will not be regenerated and used.

Do not use with water that is microbiologically unsafe or of unknown quality without adequate disinfection before or after the system.

Systems certified for cyst reduction may be used on disinfected waters that may contain filterable cysts.

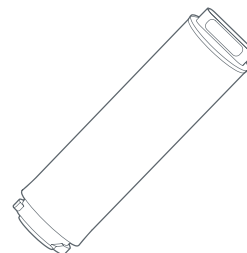
See the user manual for information about the performance indicator on the device.

### ELECTRICAL REQUIREMENTS

Power Adapter 100–240V 50/60Hz 1.0A  
[Output: 12V — 2000mA] Power: 24W

Water Purifier Unit: 100–240V 50/60Hz 0.8A  
[Input: 220V — 800mA] Power: 18W

This Class B system or component conforms to NSF/ANSI 55 for the supplemental bactericidal treatment disinfected public drinking water or other drinking water that has been tested and deemed acceptable for human consumption by the state or local health agency having jurisdiction. The system is only designed to reduce normally occurring nonpathogenic nuisance microorganisms. Class B systems are not intended for treatment of contaminated water.



### MANUFACTURER

Foshan Viomi Electrical Technology CO., LTD  
Floor 4, No.7 Building, No.2, North of Xinxu Forth Street,  
Xiashi Villager Committee, Foshan 44 528308 China  
Tel: 0757-66833887.



Scan QR code to download  
User Manual in other languages.



NU SKIN®



NU SKIN ENTERPRISES SINGAPORE PTE. LTD.,

331 NORTH BRIDGE ROAD, #18-01

ODEON TOWERS, SINGAPORE 188720

NU SKIN (MALAYSIA) SDN. BHD.,

LOT 01-05, LEVEL 1, PNB PERDANA

(COMMERCIAL CENTRE), NO. 10,

JALAN BINJAI, 50450 KUALA LUMPUR, MALAYSIA

©2020, 21 NSE PRODUCTS, INC.

75 WEST CENTER STREET, PROVO, UT 84601 NUSKIN.COM

1-800-487-1000

001703 94507300/6



System Tested and Certified by  
NSF International against  
NSF/ANSI Standard 42,53,55.  
See Performance Data Sheet for  
individual contaminant reduction.