



Make Everyday A Great Skin Day



美國如新企業香港分公司
Nu Skin Enterprises Hong Kong, LLC
(852) 2837-7700
nuskin.com.hk



Sep 2021



薈萃善秀 極地植萃護膚系列

都市人必備日常肌膚護理
Your Everyday Skin Care



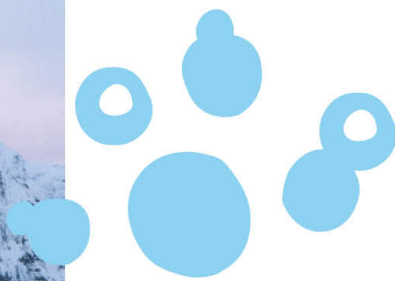
全球首個
「極地植萃」
護膚系列

肌膚都有自主性？當肌膚每天面對周遭環境的挑戰，少不免會鬧情緒。例如熬夜、污染、紫外線及藍光等一般都市人的生活環境，都會令肌膚備受壓力。讓肌膚有能力面對眾多挑戰，每天都保持最佳狀態，便是 Nutricentials® 為您帶來的「極地植萃主義」。

甚麼是「極地植萃」護膚品？

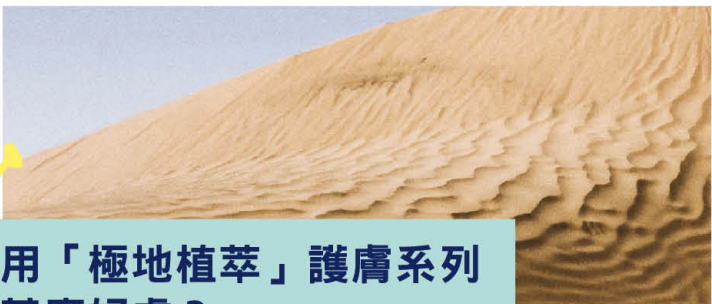
「極地植萃」護膚品使用生長於極地氣候的植物作為重點成分，它們具備適應的特性，用於護膚品中能幫助肌膚適應周遭獨有的環境及變化，讓肌膚可以修復、同時適應環境帶來的壓力。





「極地植萃」護膚系列如何幫助肌膚？

它能夠幫助肌膚適應周遭獨有的環境及變化－於日間保護及平衡肌膚；於晚間支持肌膚的天然修復程序。有助肌膚從壓力源中恢復，同時增強肌膚對自由基、污染、壓力、熬夜等環境壓力的適應力，讓肌膚保持最佳狀態。



使用「極地植萃」護膚系列有甚麼好處？

能鎮靜疲憊、過勞的肌膚，並為暗沉的肌膚煥發光澤及明亮感，讓肌膚看起來和感覺更健康。



都市生活 必備的護膚品

熬夜、污染、紫外線及藍光防禦

您會經常看手機直至深夜嗎？您是否居住在充滿污染的城市？這些都市生活方式都會為肌膚帶來壓力，導致初老、膚色不均及色斑等。所以 Nutricentials®「極地植萃」護膚系列的研發就是要保護肌膚免受每天的环境壓力源傷害。



極地植萃複合物

「極地植萃」護膚系列以生物自我調節植物萃取為重點成分，糅合各種在極端氣候下存活的植物的草本萃取配方，幫助肌膚從壓力源中恢復。

紅景天



有效從土壤中吸取養分，
同時減少自身消耗以
儲存養分

鹿草根



蘊含豐富的植物蛻皮激
素，有助保持植物對環
境的適應力

刺五加



能廣泛耐受於不同的土壤，
包括沙質、肥沃土地、
厚黏土、以及酸性、
中性及鹼性土壤

白樺茸



可於 -20°C 至 +10°C 的
嚴苛環境下生長、存活、
甚至繁殖

鱗葉卷柏



具有水分保存系統，
保護、修復植物，並於
乾旱時保持水分

Show Your Skin & The Planet Some Love!

貫徹 Nu Skin 承諾提供透明度、可持續發展、以及只運用最好的科學及特性，我們基於 Nutricentials® 無憂成分列表中的成分打造潔淨配方，同時全面採用可持續發展包裝，為環保出一分力，讓您於呵護肌膚同時愛護環境。

可持續發展包裝及成分



瓶身以 100%
再生塑膠製造



包裝管以 34% - 35%
再生塑膠製造



罐身及紙盒
均可回收

超過 90% 棕櫚成分來自
可持續棕櫚油圓桌倡議組織 (RSPO)

潔淨配方 無憂美肌

Parabens Phthalates SLS/SLES Triclosan Fragrance > 1%
Paraffin BHA/BHT PEGS TEA
Retinyl Palmitate Formaldehyde Polyethylene Beads Oxybenzone
Hydroquinone Propylene Glycol MI/MIC Coal Tar DYES
Petrolatum

WORRY FREE



Nutricentials®

「極地植萃」 護膚系列

Make Everyday A Great Skin Day

肌膚每天都要面對不同挑戰，「極地植萃」護膚系列能為您做好準備，潔膚、爽膚、注養、修護、滋潤—輕鬆 5 步即可增強肌膚對環境壓力的適應力，同時幫助肌膚從壓力源中恢復。

|| 潔面 ||

DAY AWAY

卸妝潔膚水

所有膚質適用

溫和的免沖洗卸妝潔膚水蘊含 Micelles 分子，可快速、方便、有效地清潔污垢、多餘油脂和化妝品。配合 PCA 鈉、甘油、丙二醇等保濕成分，保持肌膚滋潤、柔軟、光滑、清新。使用卸妝潔膚水後，可再用 Nutricentials® 潔膚乳作雙重清潔，或直接塗抹 Nutricentials® 柔膚水。



TO BE CLEAR

清爽潔膚啫喱

混合性至油性肌膚適用

泡沫啫喱配方可溶解阻塞毛孔的污垢、油脂及化妝品，而不會導致肌膚天然水份流失。秘訣在於可以深層清潔毛孔的氨基酸潔淨因子，以及盈潤養護配方的舒緩、修護及鎖水功效。



HYDRACLEAN

柔潤潔膚乳

乾性至中性肌膚適用

柔滑、無皂的柔潤潔膚乳可以溫和地清潔污垢、過剩的油脂及化妝品，同時保護肌膚天然水分屏障。溫和的配方注入舒緩複合物、白池花籽油及生物自我調節植物萃取，有助滋潤和舒緩肌膚，讓肌膚感覺潔淨、柔軟、滋潤，展現健康活力。



|| 柔膚 ||

IN BALANCE

平衡柔膚水

乾性至中性肌膚適用

輕盈的柔膚水有助肌膚回復最理想的 pH 值，保持肌膚平衡。配方蘊含金縷梅及加入乳酸桿菌發酵物、蘆薈、PCA 鈉和透明質酸鈉的保濕強效配方，幫助強化肌膚的天然水份屏障並減少毛孔呈現，令肌膚感覺清爽，維持最佳狀態。



HERE YOU GLOW

清爽淨膚水

混合性至油性，及痘痕肌膚適用

溫和的淨膚水加入 10% AHAs、BHA 及 PHA，可以溫和去除角質並帶走肌膚表面的死皮細胞，疏通堵塞毛孔的污垢和油脂，加快肌膚細胞更新，顯著細緻毛孔。同時，更有助清除痘痘黑頭，預防新的痘痘形成，讓肌膚看起來清新柔軟、光滑亮澤。特別添加含甘油及蘆薈的水潤舒緩配方，滋潤肌膚並鎖住水分，讓肌膚用後感覺水潤舒適。



只需 2 星期！實驗證明 100% 試用者感覺肌膚得到改善*：

- 更健康 • 得到滋養 • 更富神采 • 更富彈性 • 更有活力 •
- 更顯清新 • 更亮澤 • 更柔軟 • 得到舒緩 •

*Source: Nu Skin (2020). An evaluation to assess the efficacy and sensory attributes of Nutricentials® HERE YOU GLOW Exfoliating Toner. Unpublished data.

|| 注養液 ||

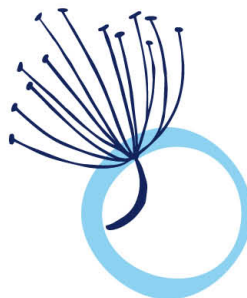
PUMPS 是濃縮的注養液，配方均集中於所採用的活性成分的獨特功效，能快速提升護膚效果，並提供個人化護膚方案以針對不同肌膚需要。

BAKUCHIOL

補骨脂酚亮肌注養液

均勻亮澤

以補骨脂酚溫和均勻膚色、減少細紋及皺紋。配合極地植萃複合物幫助提升肌膚的適應力，令肌膚從壓力源中恢復。配方同時加入叉珊藻萃取物加強對細紋及皺紋的修護；並以蘋果萃取物為肌膚注入額外水分，令肌膚更勻稱光滑。





HYALURONIC ACID + B5

B5 補濕注養液

極速注水

維他命 B5 及 1.5% 純透明質酸雞尾酒配方為肌膚提供極致保濕效果，讓肌膚持續 24 小時水潤光滑；並加入極地植萃複合物幫助抵禦日常壓力源傷害，提升肌膚的適應力；配合白桑樹根萃取物，幫助防禦外來壓力源帶來的損害，有效緩減初老徵狀。



CERAMIDES + POSTBIOTICS

後生元修護注養液

舒緩、水潤

以乳酸桿菌發酵產物（後生元）、神經酰胺配方及玻璃微藻，一同保護及加強肌膚重要的保濕屏障。配方蘊含極地植萃複合物幫助抵禦日常壓力源、污染、自由基等的傷害；同時加入 Ectoin、蘋果萃取物及氨基酸配方增加額外水分，幫助舒緩並令肌膚水潤細滑。



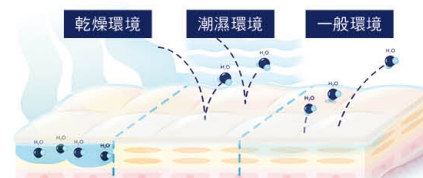
|| 修護 ||

CELLTREX® ALWAYS RIGHT

活肌特效修護液

智能管理肌膚水分 掌握肌膚主導權

透過注入 HydraFlex 配方，活肌特效修護液能形成一層柔軟、輕薄的保護膜，保護肌膚免受有害環境影響及管理肌膚水分—當肌膚乾燥時吸引水分；當環境變熱或潮濕時，將水分阻隔開，令肌膚處於合適的水潤度並持續感覺柔軟舒適。



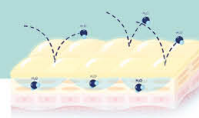
配合極地植萃複合物，有助保護肌膚免受日常壓力，如熬夜、忙碌生活及城市污染的傷害及增強適應力。活肌特效修護液質感透薄、容易吸收，有效於日間保護肌膚、讓肌膚柔軟舒適，並於晚間支持肌膚的天然修復程序，確保不論環境如何變遷，肌膚亦可保持最佳狀態。

HydraFlex 配方

獨特成分技術，可以形成一層柔軟、輕薄的保護膜，以保護肌膚免受有害環境影響；並含兩親性特質（親水性及親油性），能自動適應不斷變化的環境，按需要引進水分同時預防水分蒸發，讓肌膚持續處於合適的水潤度。



親水性
引進水分



親油性
預防水分蒸發



|| 日間滋潤防護 ||

DAY DREAM

抗光水潤乳液 SPF35 PA+++

絲滑、輕盈

糅合極地植萃複合物及防光害抗氧化配方，有助減少壓力、污染、自由基、藍光及紅外線對肌膚的影響。特別添加薑根萃取物幫助均勻膚色，提升肌膚光澤。抗光水潤乳液除提供全面的防曬保護外，更讓肌膚煥發水潤亮澤。



BLUE LIGHT PROTECTION

DAY DREAM

抗光水潤乳霜 SPF35 PA+++

柔軟、盈潤

加入極地植萃複合物及藍光及紅外線過濾配方，有助保護肌膚免受紫外線、藍光、紅外線及其他環境壓力源的傷害。配合紅沒藥醇和維他命E幫助舒緩、滋潤、保護肌膚免受自由基影響。抗光水潤乳霜為肌膚提供有效的保濕效果而不會帶來厚重黏膩感，同時更能均勻膚色，令肌膚展現透亮光澤。



BLUE LIGHT PROTECTION

甚麼是藍光？藍光會傷害肌膚嗎？

我們接觸到的藍光主要來自陽光，但人工光線及電子儀器都會發出藍光，所以無論身處室內或戶外，我們都無可避免地接觸到藍光。這樣長時間、無間斷地受到藍光照射會增加自由基生成，導致可見的老化現象例如細紋、皺紋及色素沉澱。所以，有效過濾、阻隔藍光的護膚品是都市生活的必需品。

|| 集中保濕修護 ||

日間和晚間適用

THIRST FIX

全日清爽保濕啫喱

質感輕盈、不含油分、清涼舒適

配方加入獨特的仿生物保濕複合物模擬肌膚中的天然元素，提供持久的保濕功效；以及草本貓須萃取物幫助舒緩肌膚，平衡因壓力產生的多餘油脂。全日清爽保濕啫喱為肌膚即時補水，並帶來持續24小時的滋潤。



173%
即時水潤度

124%
12小時後
水潤度

212%
即時水潤度

139%
12小時後
水潤度



DEW ALL DAY

全日柔滑保濕霜

柔滑、展現水潤光感

以蘆薈、開心果油和維他命E舒緩、軟化、平滑並滋潤肌膚一整天。同時，極地植萃複合物能幫助肌膚更好地適應並恢復環境變化帶來的影響。為肌膚提供即時及24小時的長效滋潤，讓肌膚於面對環境壓力時都可保持最佳狀態。

MOISTURIZE ME

全日潤澤保濕霜

豐盈、特效滋潤而不黏膩

蘊含極地植萃複合物，有助保護肌膚免受環境壓力的傷害並提升肌膚的適應力，而吳茱萸果萃取物則可以改善肌膚光澤和明亮度。全日潤澤保濕霜除了為肌膚帶來即時水潤及24小時滋潤外，更為肌膚增添健康光澤。



210%
即時水潤度

118%
12小時後
水潤度

|| 眼部護理 ||

EYE LOVE BRIGHT EYES

瑩亮活力眼霜

煥活、明亮

糅合頭狀胡枝子、蘋果提取物及咖啡因，幫助改善因藍光照射而導致的暗啞、膚色不均及疲憊，同時補充水分，減淡黑眼圈、浮腫及細紋和皺紋，令眼周肌膚看起來水潤明亮、健康年輕。配合極地植萃複合物，有助雙眸從日常環境壓力源中恢復，煥發活力。清涼觸感，一抹感覺煥活清新；而絲滑的質地更有助妝容持久貼服。



|| 防曬 ||

COMPLEXION PROTECTION

抗光亮肌防曬霜

高度防曬、透薄修飾

質感輕盈、備有 SPF 50 PA++++ 的礦物防曬霜蘊含極地植萃複合物，有助抵禦及加強肌膚適應壓力、污染、自由基帶來的傷害；而藍光及紅外線抗氧化配方有助預防色素積聚及膚色暗沉。淺色遮瑕配方可與各種膚色完美融合，讓肌膚散發自然光澤。



|| 定期護理 ||

每星期 2 - 3 次

BRIGHTER DAY

輕柔磨砂乳

幼滑、溫和、清新

獨有雙重功效配方，利用石榴酵素幫助鬆脫死皮細胞，同時以天然去角質礦物質將它們從肌膚上移除。結合酵素和物理性磨砂能更有效地清除死皮細胞而不傷害肌膚。另外，配方加入極地植萃複合物和蘆薈，可滋養和舒緩磨砂後的肌膚，讓肌膚看起來更清新、柔滑、明亮。



實驗證明，使用 1 次後，
100% 試用者感覺肌膚得到改善*：

- 更健康 · 得到滋養 · 更富彈性 ·
- 更有活力 · 更顯清新 ·

96% 試用者感覺肌膚*：

- 更亮澤 · 更飽滿 ·
- 更富神采 ·

*Source: Nu Skin (2020). An evaluation to assess the efficacy and sensory attributes of Nutricentials® BRIGHTER DAY Exfoliant Scrub. Unpublished data.

PILLOW GLOW

水感甜睡面膜



修復、注水

蘊含紅海藻及蘋果提取物，為肌膚密集補濕並維持水潤度；配合頭狀胡枝子改善藍光帶來的暗啞、膚色不均及疲憊；加上法國深海礦物水補充肌膚必需礦物質，有效改善光澤度、細緻毛孔同時舒緩肌膚，令肌膚一夜間水潤明亮、清新細滑。

實驗證明，只需使用 1 次，
100% 試用者感覺肌膚

· 更健康 · 更亮澤

96% 試用者感覺肌膚

· 更富神采 · 得到滋養



SPA DAY

水療煥顏面膜

水潤、滋養

採用極地植萃複合物製成，並注入仙人掌和松樹萃取物，可幫助肌膚保持水嫩、透亮。此外，水潤配方有效鎖住肌膚水分，減少乾燥並賦予肌膚健康水潤光澤。

CELLTrex® ALWAYS RIGHT

活肌特效修護面膜

放鬆、修復

注入極地植萃複合物、乳木果油、龍舌蘭莖提取物和蜀葵花提取物，有助肌膚從壓力、污染和獨特環境影響中恢復並提高適應力；並為肌膚注滿水分，舒緩和鎮靜肌膚。同時支持肌膚的自然修復程序，即時補水，讓肌膚柔滑透亮，煥發活力。



乾敏解決師
Dryness Killer

油光終結者
Shine Terminator

As Simple As What You Need

都市的忙碌生活，讓簡單的護膚程序變得可愛！自己搭配合適的護膚品，令護膚更個性化，亦更貼近個人所需。

解渴注水組合

潔面

HYDRACLEAN 柔潤潔膚乳

柔膚

IN BALANCE 平衡柔膚水

修護

CELLTREX® ALWAYS RIGHT 活肌特效修護液

日間滋潤

DAY DREAM 抗光水潤乳霜 SPF35

晚間滋潤

MOISTURIZE ME 全日潤澤保濕霜

只需 2 星期！實驗證明 100%
試用者感覺肌膚得到改善[^]：

- 更有活力 · 得到滋養 · 更柔軟 ·
- 更水潤 · 更亮澤 · 更顯清新 ·



啞緻清爽組合

潔面

TO BE CLEAR 清爽潔膚啫喱

柔膚

HERE YOU GLOW 清爽淨膚水

修護

CELLTREX® ALWAYS RIGHT 活肌特效修護液

日間滋潤

DAY DREAM 抗光水潤乳液 SPF35

晚間滋潤

THIRST FIX 全日清爽保濕啫喱

只需 2 星期！實驗證明 100%
試用者感覺肌膚得到改善^{^^}：

- 更健康 · 更有活力 · 得到滋養 ·
- 更顯清新 · 更富神采 · 得到舒緩 ·
- 更亮澤 · 更柔軟 ·



[^]Source: Nu Skin (2020). An evaluation to assess the efficacy and sensory attributes of a Nutricentials® normal/dry regimen. Unpublished data.

^{^^}Source: Nu Skin (2020). An evaluation to assess the efficacy and sensory attributes of a Nutricentials® combo/oily regimen. Unpublished data.

Your Everyday Skin Care Routine

卸妝

DAY AWAY
卸妝潔膚水



潔面

乾燥、脆弱肌膚
HYDRACLEAN
柔潤潔膚乳



油性、痘痘肌膚
TO BE CLEAR
清爽潔膚啫喱



乾燥、脆弱肌膚
IN BALANCE
平衡柔膚水

油性、痘痘肌膚
HERE YOU GLOW
清爽淨膚水

柔膚



注養液

補骨脂酚亮肌注養液
B5 補濕注養液
後生元修護注養液



日霜

乾燥、脆弱肌膚
DAY DREAM
抗光水潤乳霜
SPF35 PA+++



油性、痘痘肌膚
DAY DREAM
抗光水潤乳液
SPF35 PA+++

眼霜

EYE LOVE
BRIGHT EYES
瑩亮活力眼霜



精華

CELLTREX®
ALWAYS RIGHT
活肌特效修護液



滋潤面霜

(日夜適用)

THIRST FIX
全日清爽保濕啫喱



DEW ALL DAY
全日柔滑保濕霜



MOISTURIZE ME
全日潤澤保濕霜



防曬

COMPLEXION
PROTECTION
抗光亮肌防曬霜
SPF50 PA++++



定期護理

BRIGHTER DAY
輕柔磨砂乳



PILLOW GLOW
水感甜睡面膜



SPA DAY
水療煥顏面膜



CELLTREX®
ALWAYS RIGHT
活肌特效修護面膜





Make Everyday A Great Skin Day



Nu Skin Enterprises Hong Kong, LLC
(852) 2837-7700
nuskin.com.hk



Sep 2021

NUTRICENTIALS®



BIOADAPTIVE SKIN CARE™

Your Everyday Skin Care

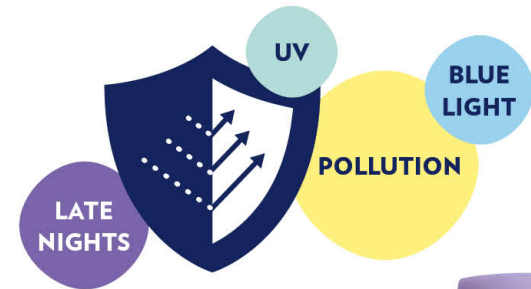


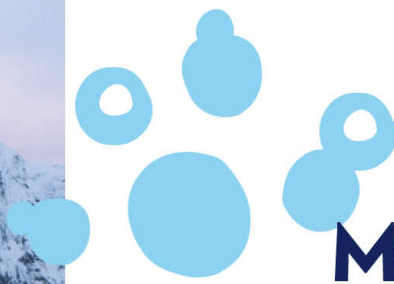
The World's 1st Complete Bioadaptive Skin Care System

Skin has a mind of its own? Your skin is under pressure of daily environmental stressors from modern lifestyle like late nights, pollution, and UV and blue light rays. To bounce skin back from these stressors and have it always look the best, it is the "Bioadapt-ism" that Nutricentials® brings you with.

What is Bioadaptive Skin Care?

Bioadaptive skin care is formulated with plants that thrive in extreme climates, that their adaptive properties when used in skin care products, help skin adapt to its changing and unique environment so it can recover from - and gain resiliency to - environmental stressors.





Modern Lifestyle Needs The Right Skin Care

How Bioadaptive Skin Care helps?

It helps your skin adapt to its changing and unique environment - protects and balances skin during the day while supporting its natural repair process over night. It helps skin bounce back from life's daily stressors, boosting skin's resiliency to free radicals, pollution, stress, lack of sleep, etc. so you always look your best.



What is the benefits of using Bioadaptive Skin Care?

It calms tired, overexerted skin and revitalizes a dull appearance by promoting a glowing, radiant complexion for skin that looks and feels healthier than ever.



Late Nights, Pollution, UV and Blue Light Rays Defense

Have you ever used the mobile till late night? Are you living in the city surrounded by pollution? All these modern lifestyle causes stress to your skin with premature aging, uneven skin tone and hyperpigmentation. Here we have Nutricentials® Bioadaptive Skin Care™ protecting you from everyday skin stressors.



Bioadaptive Botanicals Complex

The series is formulated with Bioadaptive Botanical Complex, which is a blend of botanical extracts from plants that thrive in extreme climates and can help skin bounce back from stressors.

Rhodiola Rosea Root



Efficiently pulls nutrients from the soil, reducing its consumption, and stores the nutrients

Maral Root



Contains a rich source of phytoecdysteroids which helps remain resilient to its environment

Siberian Ginseng



Widely tolerant of different soils including sandy, loamy, heavy clay, acidic, neutral, and alkaline soil chemistry

Chaga Mushroom



Can grow, thrive, and even reproduce in frigid environments with temperatures ranging from -20°C to +10°C

Resurrection Plant



Has a moisture-retentive system to protect and repair the plant, plus keep it hydrated during droughts

Show Your Skin & The Planet Some Love !

With Nu Skin's commitment to transparency, sustainability and using only the best of science and nature, we bring you clean formulas based on our Nutricentials® worry-free ingredient list - all in sustainable packaging. You can now care your skin as well as the environment.

Sustainable Packaging & Ingredients



Bottles are made from 100% post-consumer recycled plastic



Tubes are made with 34 - 35% post-consumer recycled plastic



Jars and cartons are recyclable by design

More than 90% of our palm ingredients are RSPO (Roundtable on Sustainable Palm Oil) sourced



Worry-Free Beauty



Parabens Phthalates SLS/SLES Triclosan Fragrance > 1 %
Paraffin BHA/BHT DECS TEA DEE Oxybenzone
Retinyl Palmitate Formaldehyde Polyethylene Beads Coal Tar DYES
Hydroquinone Propylene Glycol MI/MIC Petrolatum

WORRY-FREE



Nutricentials® Bioadaptive Skin Care System™

Make Everyday A Great Skin Day

Your skin faces different challenges everyday. Bioadaptive Skin Care preps you by simply 5 - step regimen - cleanse, tone, pumps, treat, hydrate - to recover from and gain resiliency to environmental stressors.

|| Cleanse ||

DAY AWAY

Micellar Beauty Water

For All Skin Type

A gentle, no-rinse cleanser with micelles that helps to remove dirt, excess oil and makeup quickly, in a more convenient and effective way. Formulated with Sodium PCA, Glycerin and Propanediol, it leaves skin feeling moisturized, soft, smooth and refreshed. You can use Nutricentials® cleansers after using Micellar Beauty Water as double-cleansing, or simply put on Nutricentials® toners afterwards.



TO BE CLEAR

Pure Cleansing Gel

For Combination to Oily Skin

A gel-to-foam formula dissolves pore-blocking dirt, oil, and makeup without stripping your skin of its natural moisture. The secret is the Amino Acid Cleansing Agents that deep cleans pores and the Moisturizing and Conditioning Blend that soothes, conditions and restores moisture to the skin.



HYDRACLEAN

Creamy Cleansing Lotion

For Normal to Dry Skin

A creamy, soap-free cleanser that gentle enough to cleanse away dirt, excess oil, and makeup, while protecting your skin's natural moisture barrier. Its mild formula is infused with a Soothing Blend, Meadowfoam Seed Oil and bioadaptive botanicals to help moisturize and comfort skin, leaving skin feeling clean, soft, hydrated - and looking vibrant and healthy.



|| Tone ||

IN BALANCE

pH Balance Toner

For Normal to Dry Skin

A light toner helps skin stay balanced by restoring it to its optimal pH level. Formulated with Witch Hazel and a Moisture Strength Blend featuring Lactobacillus Ferment, Aloe, Sodium PCA and Sodium Hyaluronate to help strengthen skin's natural moisture barrier and reduce the appearance of pores, leaving skin feeling refreshed and looking its best.



HERE YOU GLOW

Exfoliating Toner

For Combination to Oily, and Acne Skin

A gentle toner, with an effective 10% blend of AHAs, BHA, and PHA to gently exfoliating and “ungluing” dead skin cells from the surface of skin, unclogs pore-blocking dirt and oil, accelerates cell turnover and visibly reduces pores. It also helps clear up acne blemishes and blackheads while helping prevent new breakouts, leaving you with a fresh, soft, smooth, radiant appearance. Specially included Hydrating and Soothing Blend with Glycerin and Aloe to attracts and binds moisture to the skin for a more hydrated, soothing after-feel.



Clinically proven **100%** subjects self-perceived that their skin were improved after **2 weeks** of use*:

- **Healthier** • **Nourished** • **More Revitalized** • **More Supple** • **Energized** •
- **Look Fresh** • **More Radiant** • **More Resilient** • **Soothed** •

*Source: Nu Skin (2020). An evaluation to assess the efficacy and sensory attributes of Nutricentials® HERE YOU GLOW Exfoliating Toner. Unpublished data.

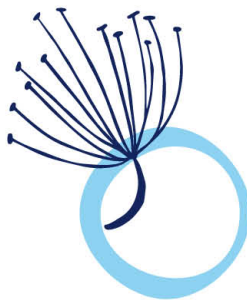
|| PUMPS ||

PUMPS are concentrated boosters, formulated with a focus on the unique capabilities of active ingredients, to quickly enhance skin care results, and provide personalized solution to cope with different skin needs.

GET EVEN

BAKUCHIOL PUMPS

Infused with Bakuchiol which helps gently even skin tone and minimize the appearance of fine lines and wrinkles. With Bioadaptive Botanical Complex to increase resiliency and help skin bounce back from stressors. While added Jania Rubens Extract to further treat fine lines and wrinkles, and Apple Extract to provide skin a burst of extra moisture for visibly smoother, more even skin.





HEY HYDRATION

HYALURONIC ACID + B5 PUMPS



Formulated with Vitamin B5 and 1.5% Pure Hyaluronic Acid Cocktail to provide skin with ultimate hydration for smooth and revitalized skin for 24 hours; while added Bioadaptive Botanical Complex to protect against damaging effects of daily stressors and help skin bounce back from stressors; included also White Mulberry Tree Root Extract to help protect skin against damage and premature aging caused by external stressors.

SMOOTH & SOOTHE

CERAMIDES + POSTBIOTICS PUMPS

Included Lactobacillus Ferment (Postbiotic), Ceramide Blend and Glass Microalgae to protect and strengthen skin's moisture barrier; Bioadaptive Botanical Complex to protect skin against damaging effects of daily stressors, pollution and free radicals; while added Ectoin, Apple Extract and Amino Acid Blend to soothe and hydrate the skin.



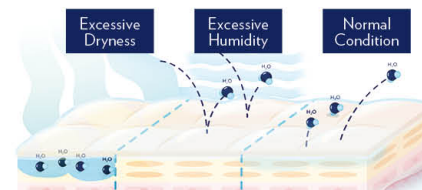
|| Treat ||

CELLTREX® ALWAYS RIGHT

Recovery Fluid

Take Control of Your Skin with Smart Hydration Management

By infusing HydraFlex Blend, Recovery Fluid forms a soft, ultra-light shield that protects skin from harmful environmental effects and manages skin hydration - attract moisture when it's dry, but filter it away if your surroundings get hot or humid, allows skin to have just the right amount of hydration and always feels soft and comfortable.



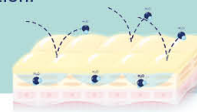
Incorporate with a blend of bioadaptive botanicals helps protect against, and increase resiliency to, everyday stressors like late nights, busy days, and urban pollution. This lightweight, fast-absorbing serum keeps skin soft, protected, and comfortable during the day, and complements skin's natural repair process during the night to make sure that no matter what life throws at you, your skin is always right.

HydraFlex Blend

A unique ingredient technology that forms a soft, ultra-light shield that protects skin from harmful environmental effects; and auto-adapts to changing environment with amphiphilic properties (both water loving and oil loving), drawing in moisture and preventing evaporation as needed, to allow skin to have just the right amount of hydration.



Water Loving
Draw in Moisture



Oil Loving
Prevent Evaporation



|| Day Moisturization ||

DAY DREAM

Protective Lotion SPF35 PA+++

Silky, Lightweight

Incorporates Bioadaptive Botanical Complex and Blue Light and Infrared Antioxidant Blend, help reduce the effects of stress, pollution, free radicals, blue light, and infrared on your skin. Plus Ginger Root Extract helps promote luminosity and even skin tone. Protective Lotion not only provides broad spectrum sunscreen protection, but also gives you a dewy, radiant appearance.



BLUE LIGHT PROTECTION

DAY DREAM

Protective Cream SPF35 PA+++

Soft, Creamy

Formulated with Bioadaptive Botanical Extracts and a Blue Light and Infrared Filtering Blend, help protect against UV, blue light, infrared, and other damaging environmental stressors. With Bisabolol and Vitamin E to soothe, hydrate and protect skin from free radicals. Protective Cream provides effective hydration without feeling heavy or greasy, while helps even skin tone and gives skin a glowing, luminous complexion.



BLUE LIGHT PROTECTION

What is Blue Light? Does Blue Light Cause Damage To Skin?

We get most of our blue light exposure from sunlight, but because of artificial lighting and devices, we are constantly exposed to it both indoors and outdoors, so our skin never escapes it. This long term, constant exposure to blue light can increase the generation of free radicals and lead to visible signs of aging such as lines, wrinkles, and hyperpigmentation. Therefore, skin care that efficiently filter or block blue light is a must for modern lifestyle.

|| Intensive Moisturization ||

Suitable for Day & Night

THIRST FIX

Hydrating Gel Cream

Lightweight, Oil-free, Cooling

Features a unique Biomimetic Moisturizing Complex mimics natural elements in skin to provide long-lasting hydration; and botanical Cats Whisker Extract helps soothe the skin and balance excess sebum caused by stress. The hydrating gel cream provides immediate hydration and 24 hours of continuous moisturization.



173%
immediate
hydration

104%
hydration after
12 hours



212%
immediate
hydration

139%
hydration after
12 hours

DEW ALL DAY

Moisture Restore Cream

Creamy, Dewy Glow

Soothes, softens, smooths, and provides all-day moisture with Aloe Vera, Pistachio Nut Oil and Vitamin E. While a blend of bioadaptive botanicals helps skin adapt so that it bounces back better this time and the next. It provides immediate hydration and 24 hours of continuous moisturization, and keeps your skin in its best form, whatever stressors you face.

MOISTURIZE ME

Intense Hydrating Cream

Creamy, Ultra-rich, Non-greasy

Formulated with bioadaptive botanicals to help protect against, and increase skin's resilience to, environmental stressors, and Evodia Rutaecarpa to improve skin radiance and luminosity. Intense Hydrating Cream not only provide hydration on application but also 24 hours moisturization with a healthy glow.



210%
immediate
hydration

118%
hydration after
12 hours

|| Eye Care ||

EYE LOVE BRIGHT EYES

Illuminating Eye Cream

Rejuvenating, Brightening

Contains Roundhead Bush Clover, Apple Extract and Caffeine, the eye cream helps improve the look of dull, uneven and tired skin caused by daily stressors, including blue light exposure. It also provides moisture, reduces the appearance of dark circles, puffiness, lines and wrinkles, leaving skin looks dewy, healthier and younger. Combining Bioadaptive Botanical Complex which helps skin bounce back from stressors. The instant cooling sensation helps skin look and feel refreshed, while the silky-smooth texture helps hold makeup in place.



|| Regular Treatment ||

2 – 3 Times Per Week

BRIGHTER DAY

Exfoliating Scrub

Extra-fine, Gentle, Fresh Scent

Double-feature formula includes Pomegranate Enzymes to help loosen dead skin cells while Natural Exfoliating Minerals remove them from skin. Combining both enzymatic and physical exfoliation more effectively clears out dead skin cells without damaging your skin. Plus, a Bioadaptive Botanical Complex and Aloe Vera nourish and soothe for post-scrub skin comfort, leaving skin looking refreshed, smooth and brighter.



|| SUNSCREEN ||

COMPLEXION PROTECTION

Daily Mineral Sunscreen

Sun Protection, Translucent Coverage

Lightweight, SPF50 PA++++ mineral sunscreen infused with Bioadaptive Botanical Complex to help protect against, and increase resiliency to, everyday stressors like pollution and free radicals; Blue Light and Infrared Antioxidant Blend helps to prevent visible discoloration and dull looking skin. With lightly tinted coverage that blends perfectly with a variety of skin tones, enhancing skin's natural radiance.



Clinically proven **100%** subjects self-perceived that their skin were improved after **1** use*:

• **Healthier** • **Nourished** • **More Resilient** •

• **Energized** • **Look Fresh** •

96% subjects self-perceived that their skin were*:

• **More Radiant** • **Plumped** •

• **More Revitalized** •

*Source: Nu Skin (2020). An evaluation to assess the efficacy and sensory attributes of Nutricentials® BRIGHTER DAY Exfoliant Scrub. Unpublished data.

PILLOW GLOW

Sleeping Mask



Moisturize , Recover

Includes Red Algae and Apple Extract, deliver an intense rush of immediate and long-lasting overnight hydration; while Deep Sea Water helps improve luminosity, minimize the appearance of pores and sooth the skin by replenishing skin-essential minerals. Skin is rejuvenated and hydrated overnight.

Clinically proven **100%** subjects self-perceived that their skin were improved after **1** use,

• **Healthier** • **More Radiant**

96% subjects self-perceived that their skin were:

• **More Resilient** • **Nourished**



SPA DAY

Creamy Hydrating Masque

Hydrate, Nourish

Made with Bioadaptive Botanical Complex and infused with Cactus and Pine Extracts to help your skin stay dewy and radiant. Plus, the hydrating formula binds moisture to skin, reducing dryness and giving skin a healthy, hydrating glow.

CELLTrex® ALWAYS RIGHT

Recovery Mask

Relax, Recharge

Infused with bioadaptive botanicals, Shea Butter, Agave Extract and Hollyhock Extract, the lightweight emulsion helps your skin recover from, and increase resiliency to, the effects of stress, pollution, and your unique environment; and delivers quenching hydration while soothing and calming skin. It also supports skin's natural repair process, provides immediate moisturization, and gives skin a smooth, glowing, energized look.



**Dryness
Killer**

**Shine
Terminator**

As Simple As What You Need

Modern life is too busy that everyone wants a simple skin care regimen!
Mix & match products that fit you most to make skin care more
personalized and suit your needs.

Fill Me Up Combo

Cleanser

HYDRACLEAN Creamy Cleansing Lotion

Toner

IN BALANCE pH Balance Toner

Serum

CELLTREX® ALWAYS RIGHT Recovery Fluid

Day Moisturizer

DAY DREAM Protective Cream SPF35

Night Moisturizer

MOISTURIZE ME Intense Hydrating Cream

2 weeks! Clinically proven **100%**
self-perceived improvement[^] !

- **Revitalized** • **Nourished** • **More Supple** •
- **Look Dewy** • **More Radiant** •
- **Look Fresh** •

Clear It Away Combo

Cleanser

TO BE CLEAR Pure Cleansing Gel

Toner

HERE YOU GLOW Exfoliating Toner

Serum

CELLTREX® ALWAYS RIGHT Recovery Fluid

Day Moisturizer

DAY DREAM Protective Lotion SPF35

Night Moisturizer

THIRST FIX Hydrating Gel Cream

2 weeks! Clinically proven **100%**
self-perceived improvement^{^^} !

- **Healthier** • **Energized** • **Nourished** •
- **Look Fresh** • **More Revitalized** •
- **Soothed** • **More Radiant** •
- **More Supple** •



[^]Source: Nu Skin (2020). An evaluation to assess the efficacy and sensory attributes of a Nutricentials® normal/dry regimen. Unpublished data.

^{^^}Source: Nu Skin (2020). An evaluation to assess the efficacy and sensory attributes of a Nutricentials® combo/oily regimen. Unpublished data.

Your Everyday Skin Care Routine

