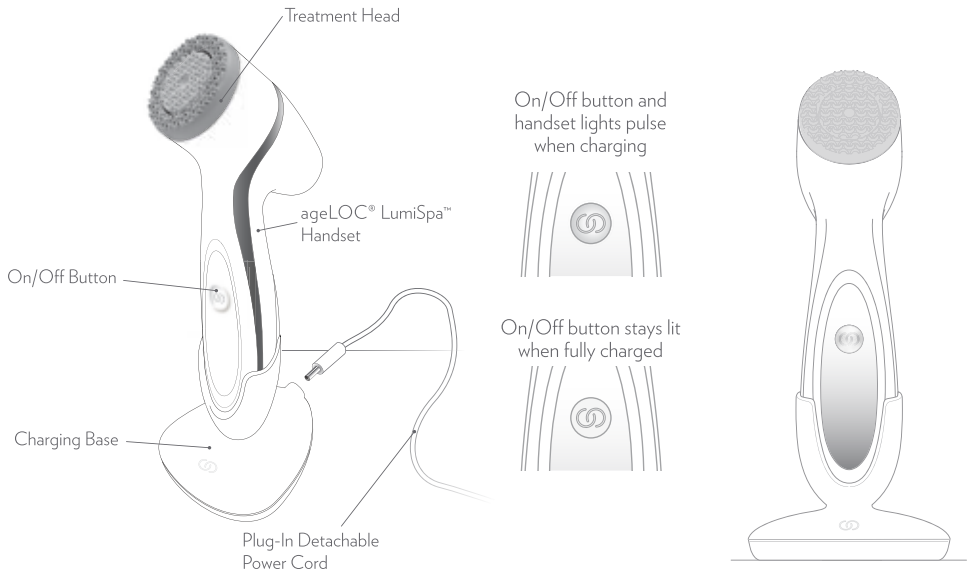


GETTING STARTED



Charging your ageLOC® LumiSpa™ device

Place your ageLOC® LumiSpa™ device on the charging base and charge overnight.

A full charge will power normal usage of the device for 7 to 10 days.

Do not use the plug-in detachable power supply in a wet environment.

STEPS

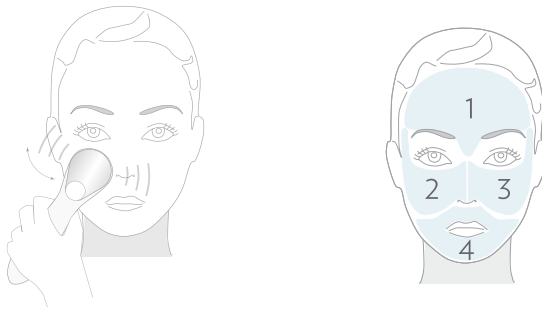
1. Moisten face with warm water and apply ageLOC® LumiSpa™ Activating Cleanser.

2. Wet treatment head then turn on device by pressing On/Off button.

Slowly glide the treatment head back and forth over face using broad strokes.

The ageLOC® LumiSpa™ device will pause quickly three times every 30 seconds to prompt you to move from one area of the face to the next.

Do not use a scrubbing motion or press too hard.

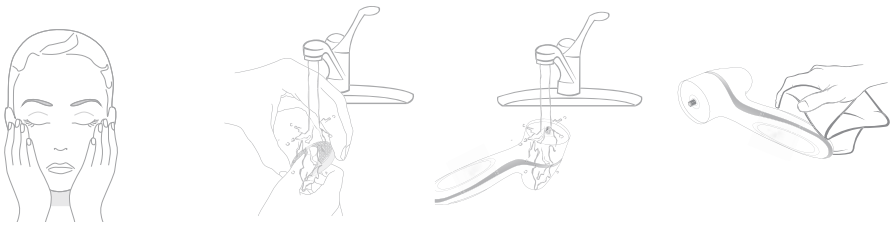


3. Device will stop after your treatment is complete and will turn off automatically.

4. Rinse your face and pat dry.

5. Remove the treatment head from the device. Rinse it with water while rubbing grooves to remove residual Activating Cleanser. Dry thoroughly.

6. Rinse device with water. Wipe device dry with a clean cloth. ***Ensure device is completely dry before placing on charging stand.***



Your face is now ready for the next skin care regimen step.

Replace treatment head every three months to ensure optimal performance.

ageLOC® LumiSpa™ is a first-of-its-kind, dual-action skin refining system, delivering dramatic skin renewal and deep cleansing in a single treatment. Use morning and night for an energizing facial massage and glowing results that intensify over time. **Softer, smoother skin is just one treatment away.**

